

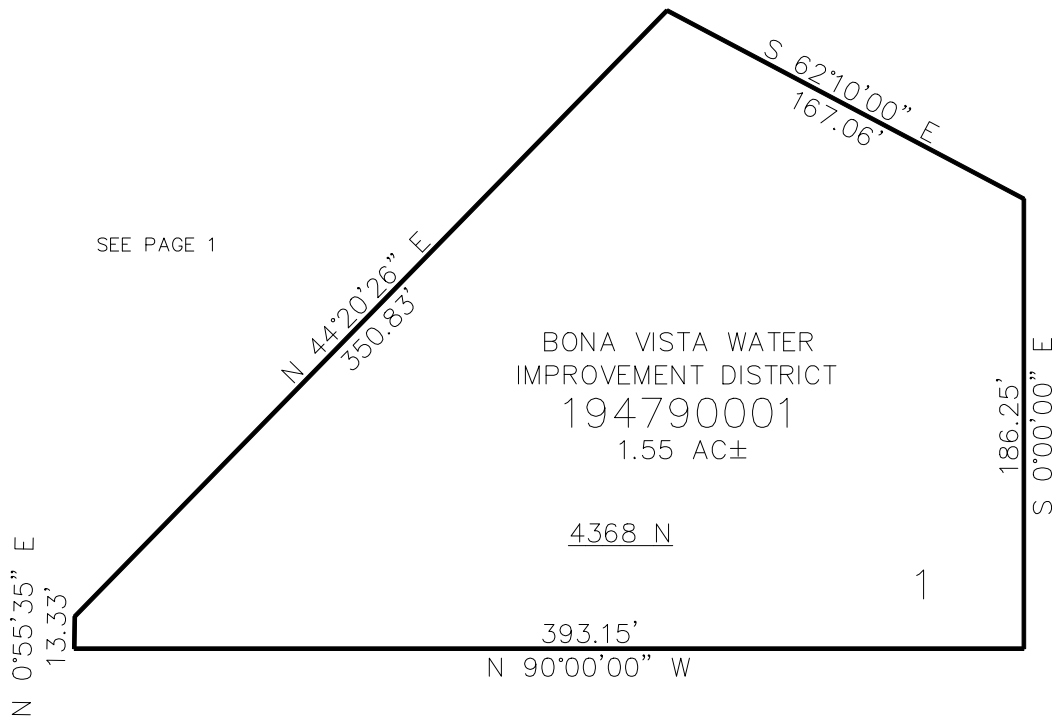
PART OF THE SW.1/4, OF SECTION 13, T.7N., R.2W., S.L.B. & M.
HOT SPRINGS RESERVOIR NUMBER 2 SUBDIVISION

IN WEBER COUNTY
SCALE 1" = 40'

TAXING UNIT: 1

SEE PAGE 1

SEE PAGE 1



SEE PAGE 1

10' UTILITY & DRAINAGE EASEMENTS EACH
SIDE OF PROPERTY LINES AS INDICATED
BY DASHED LINES EXCEPT AS OTHERWISE
SHOWN.

FOR COMPLETE SURVEY DATA SEE
ORIGINAL DEDICATION PLAT IN
BOOK 97, PAGE 47 OF RECORDS.